



Why Email Management Matters

The modern business environment presents new challenges every day. Some, like corporate growth, are expected and welcome, others are not so welcome. But it is the organizations that adequately prepare for these unexpected challenges that truly possess the enterprise-level wisdom needed to fuel their growth. EP Series Email Management Appliances are engineered for those who choose to confront the tough realities before they interfere with day-to-day operations.

Regulations, Compliance and Legality

Any enterprise currently trading is subject to regulations, and compliance with those regulations is frequently costly and complex. In order to steer clear of legal and regulatory pitfalls, businesses must be able produce information when requested – and do so with the required speed, accuracy and efficiency. For obvious reasons, systems to cope with these common issues must be in place, and PivotStor EP Series Email Management Appliances are reliable tools that can be counted upon when they are needed most.



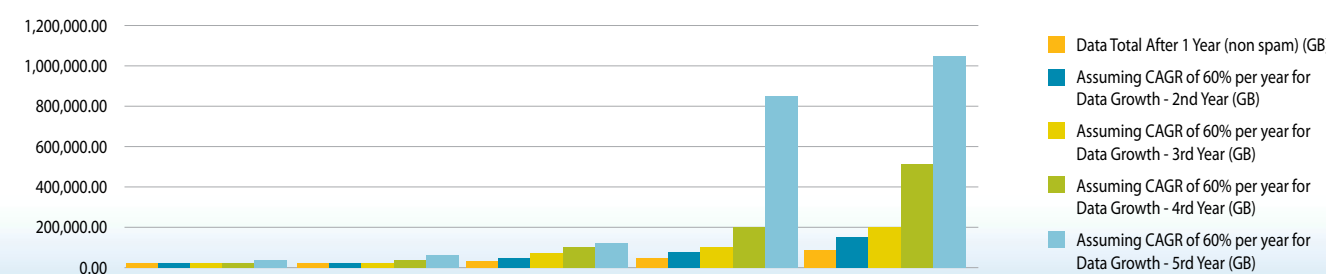
Security and Malicious Attacks

Spam, viruses and other variations of malicious code are everywhere, all the time. In fact, it is estimated that spam comprises up to 90% of all email. Add to that the risk presented by denial of service, disgruntled employees, spying, address spoofing or viruses, and it becomes clear that information security must be among an organization's top priorities. But combating these threats need not be time consuming or costly, and prevention against stolen intellectual property, system downtime, destroyed data or damage to reputation need not be complex. PivotStor EP Series Email Management Appliances secure information and intellectual property in a way that delivers maximum business advantage.



Networks, Storage and Growth

As an organization grows, so do the challenges of managing vital information. With the volume of data (including email) growing at a rate of 60% per year, duplication of information and network overloading can cause slow responses and bottlenecks – each of which can severely hamstring an enterprise's ability to operate efficiently. Naturally, merely adding more storage is not a viable solution. Data management, like that offered by PivotStor EP Series Email Management Appliances, is no longer a luxury; it is imperative.



EP Series Email Management Appliances



| PivotStor EP Series | EP-50 | EP-1000 | EP-2500 | EP-2500+ |
|---------------------------------------|--|--|-------------------------|-------------------------------|
| Form Factor | Book Size | 19" short depth rack 1U | 19" short depth rack 1U | 19" 2U Full Length Rack Mount |
| Dimensions (W x H x D) | Book Size | 430 x 43 x 508 mm | 430 x 43 x 508 mm | 430 x 44 x 600 mm |
| Processor | Intel | Dual or Quad Core Intel™ Sequence Processors) | | |
| RAM | 1GB | 2GB | 4GB | 8GB |
| Ethernet | 2 x 1GB | 2 x 1GB Ethernet (10GbE or FC adaptors available as additional option) | | |
| HD Drives | 1 x 160GB | 3 x 500GB | 3 x 750TB | 6 x 1TB |
| Redundant PSU Option | No | Yes | Yes | Yes |
| Mailboxes Handled | Up to 50 | Up to 1000 | Up to 2500 | Over 2500 |
| Max Internal Data Repository | 140GB | 1TB | 1.5TB | 12TB |
| No of EP-Filter Licenses as standard | 5 | 5 | 5 | 5 |
| No of EP-Archive Licenses as standard | 5 | 5 | 5 | 5 |
| No of EP-Secure Licenses as standard | 5 | 5 | 5 | 5 |
| Anti-Virus Subscription as standard | 90 Days | 90 Days | 90 Days | 90 Days |
| Anti Virus Licenses as standard | 50 | 1000 | 2500 | 2500 |
| No. Emails Per Day (Inc SPAM) | 16,600 | 166,000 | 415,000 | 830,000+ |
| No. Emails Per year (Inc SPAM) | 6,059,000 | 60,590,000 | 151,475,000 | 3,029,500,000+ |
| Supported Email Servers | Exchange 5.5, 2003, 2007, Lotus Notes, LDAP, LDAP Open, SMTP, POP3 | | | |
| Input Voltage | 110v-220v | 110v-220v | 110v-220v | 110v-220v |

| EP-Ware™ License Packs (License Key) | Users | Part Number | EP-Ware™ License Packs (License Key) | Users | Part Number |
|--|-------|-------------|---|-------|-------------|
| EP-Archive™ 25 user pack | 25 | SL-AN0025N | EP-Secure™ 5 user pack | 5 | SL-SN0005N |
| EP-Archive™ 50 user pack | 50 | SL-AN0050N | EP-Secure™ 10 user pack | 10 | SL-SN0010N |
| EP-Archive™ 100 user pack | 100 | SL-AN0100N | EP-Secure™ 25 user pack | 25 | SL-SN0025N |
| EP-Archive™ 250 user pack | 250 | SL-AN0250N | EP-Secure™ 50 user pack | 50 | SL-SN0050N |
| EP-Archive™ 500 user pack | 500 | SL-AN0500N | EP-Secure™ (To maximum capacity for model) | | TBA |
| EP-Archive™ 1000 user pack | 1000 | SL-AN1000N | Anti-Virus & Spam subscription 1 year - EP-50 | 50 | SL-V1001 |
| EP-Archive™ (EP-50) Maximum 50 Users | 50 | SL-A10050N | Anti-Virus & Spam subscription 2 years - EP-50 | 50 | SL-V1002 |
| EP-Archive™ (EP-1000) Maximum 1000 Users | 1000 | SL-A21000N | Anti-Virus & Spam subscription 3 years - EP-50 | 50 | SL-V1003 |
| EP-Archive™ (EP-2500) Maximum 2500 Users | 2500 | SL-A32500N | Anti-Virus & Spam subscription 1 year - EP-1000 | 1000 | SL-V2001 |
| EP-Archive™ (EP-2500+) Over 2500 Users | | TBD | Anti-Virus & Spam subscription 2 years - EP-1000 | 1000 | SL-V2002 |
| EP-Filter™ 25 user pack | 25 | SL-FN0025N | Anti-Virus & Spam subscription 3 years - EP-1000 | 1000 | SL-V2003 |
| EP-Filter™ 50 user pack | 50 | SL-FN0050N | Anti-Virus & Spam subscription 1 year - EP-2500 | 2500 | SL-V3001 |
| EP-Filter™ 100 user pack | 100 | SL-FN0100N | Anti-Virus & Spam subscription 2 years - EP-2500 | 2500 | SL-V3002 |
| EP-Filter™ 250 user pack | 250 | SL-FN0250N | Anti-Virus & Spam subscription 3 years - EP-2500 | 2500 | SL-V3003 |
| EP-Filter™ 500 user pack | 500 | SL-FN0500N | Anti-Virus & Spam subscription 1 year - EP-2500+ | | SL-V4001 |
| EP-Filter™ 1000 user pack | 1000 | SL-FN1000N | Anti-Virus & Spam subscription 2 years - EP-2500+ | | SL-V4002 |
| EP-Filter™ (EP-50) Maximum 50 Users | 50 | SL-F10050N | Anti-Virus & Spam subscription 3 years - EP-2500+ | | SL-V4003 |
| EP-Filter™ (EP-1000) Maximum 1000 Users | 1000 | SL-F21000N | | | |
| EP-Filter™ (EP-2500) Maximum 2500 Users | 250 | SL-F32500N | | | |
| EP-Filter™ (EP-2500+) Over 2500 Users | | TBD | | | |

Company Information

PivotStor is unique among today's vendors of data protection products, combining the ability to bring to market best-in-class technology solutions, with an experienced team of executives dedicated to building and maintaining trusted, mutually beneficial relationships with distributors, VARs, integrators and the end-users they serve



PivotStor, LLC
7274 Clairemont Mesa Blvd
San Diego, CA 92111
858.279.7807
www.pivotstor.com

©2008 PivotStor, LLC. All rights reserved. Printed in USA. 08-NEW-07867



EP Series Email Management Appliances

EP Series Email Management Appliances

Filtering, Archiving and Encryption Made Simple



The PivotStor EP Series e-mail management appliance delivers total control over company communications with complete transparency and unrivaled simplicity for users. The suite of proprietary EP-Ware™ software solutions archives, encrypts, digitally signs and filters out spam and viruses while simultaneously offering end users intuitive control over their entire email universe.

- Intelligent Archiving**
Archive only "real" emails and attachments, not spam or viruses
- Outbound Encryption**
Encrypt and digitally sign archives and outbound messages
- Pre-emptive Screening**
Screen for spam *before* messages get to end users
- End User Control**
Provide astonishingly simple and complete control over own data
- Easy Retrieval**
Archived data is only a few clicks away for users and administrators alike
- Scalability**
Access solutions starting at just one user

Find Peace of Mind With Your Email Management Solution

No company can function without email, and most companies have many years worth of vital information stored. But is email being properly managed? Does it place a strain on your storage resources? Can end users find the emails they need quickly – without help from IT staff?

The PivotStor EP Series of email management appliances is designed to take away the pains associated with running this critical part of any business. It does so by providing an integrated suite of proprietary EP-Ware™ software solutions on a highly reliable hardware platform. PivotStor email management appliances are available in four models – Entry Level, SMB, SME and Enterprise. All deliver "plug and play" operation in virtually any email environment – including Microsoft® Exchange, SMTP and POP3 servers.

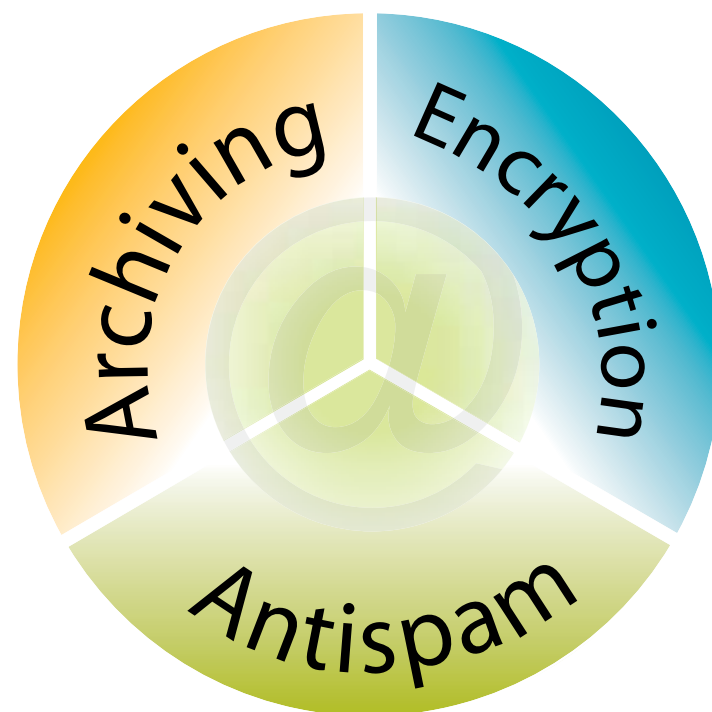
The PivotStor EP Series email management appliance hosts three powerful software modules, each addressing the most critical components of email management:

- EP-Filter** creates a 100% spam-free environment by utilizing multi-layered, intelligent filters. It combines robust, state-of-the-art spam and proactive virus protection with technology engineered to be simple to setup. Administrators can establish and modify a litany of email-specific permissions, and users can manage an array of filter policies, including quarantining.
- EP-Archive** provides an intuitive, non-complex means by which end users can access and retrieve archived email. Email and attachment files are fully indexed and single-instanced, and users can search archives based on a number of basic and advanced search criteria. EP-Archive is easily integrated into Microsoft® Outlook for seamless user access and searching.
- EP-Encrypt** enables users to encrypt email (inbound and outbound) and archived information with unparalleled simplicity and reliability. Because the EP Series appliance resides between the firewall and mail server, it allows for password protection and even an option to request that email recipients download special reading software in order to view messages. EP-Encrypt protects intellectual property using automatic, definable encryption policies.

Email Management in Three-Part Harmony

PivotStor EP Series Email Management Appliances host an integrated suite of patented EP-Ware™ software solutions, each of which works synergistically with the others. The intuitive and sophisticated interplay between the three technologies is what makes the EP Series so easy for end users to understand, implement and utilize.

EP Filter dynamically updates its spam and virus databases and it even uses a challenge system to catch unknown senders and ensure their legitimacy. Then, by fully indexing each filtered email, end users are empowered to quickly and easily search archives and retrieve email files or attachments. In other words, each element of the EP Series software suite provides another layer of potency to its suitemates.



Simple, Non-invasive Implementation

PivotStor EP Series Email Management Appliances have been engineered to reside between the enterprise's firewall and its mail server. This arrangement enables the filtering of incoming and outgoing email before it reaches the end user, which results in employees maintaining focus on their work rather than manually managing their inboxes.

Sheltering end users from undesirable email protects the company and its staff from legal action, as well as saving money on IT infrastructure, administration and storage. EP Series Email Management Appliances contain full SMTP and POP3 support, and they can be used with Microsoft Outlook®, IBM Lotus Notes® and OpenLDAP.



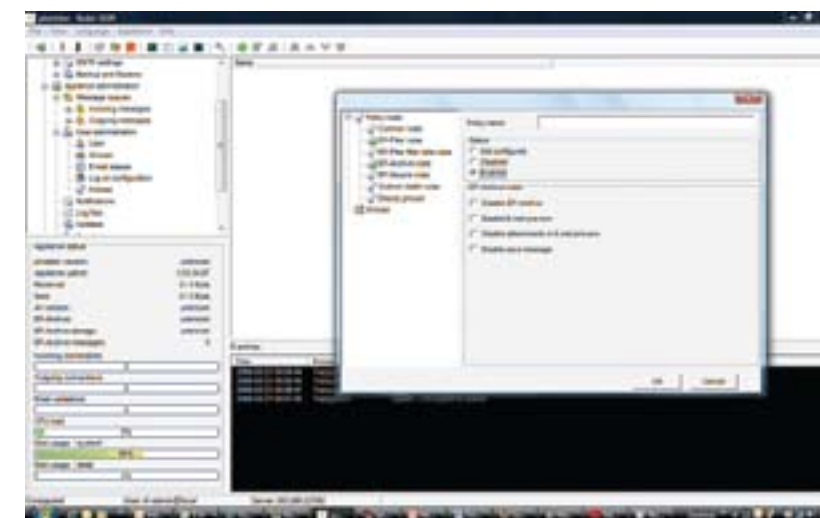
Three Powerful, Integrated Solutions in One Easy-to-Use Appliance

The PivotStor **EP Series** email management appliances take control of every email at the moment it arrives at the gateway.

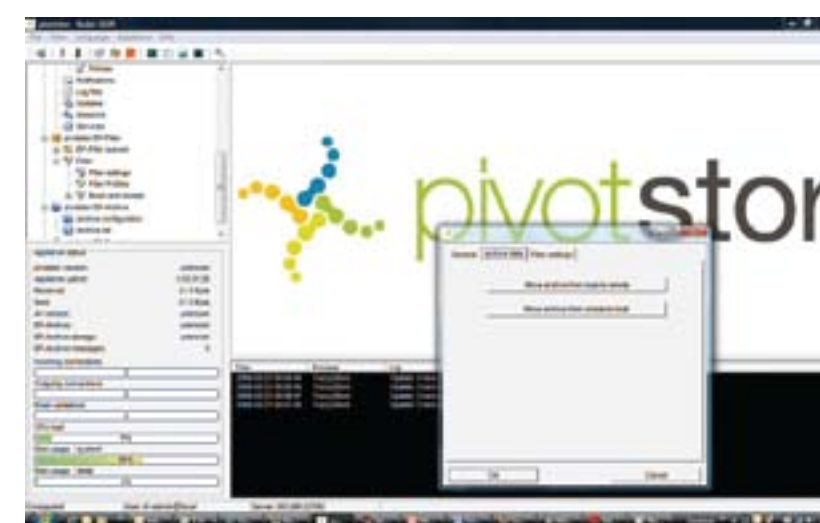
1 **EP-Filter™: Intelligent filters create a spam-free environment**

Before allowing any information to pass through to the end user, **EP-Filter** engages its multiple, customizable filters and policy engines to block known spam and check for viruses. The automation of this critical task saves the organization as much as five seconds per email, and given the ever-increasing volume of malicious or undesirable communications, the savings could equate to dozens of daily man-hours.

If an incoming email has been sent by an unknown source, **EP-Filter** automatically responds to the sender with a short "challenge" message – a simple request for confirmation that at once defeats autobots and, in the event that the sender is legitimate, offers a branded marketing tool for the organization.



EP-Ware gives you complete control over your email management system by providing centralized policy control over EP-Archive, EP-Filter and EP-Secure from one easy-to-use console. Multiple policies can be created to fully integrate the EP series with your business needs.



It is possible to host the archive either on the EP appliance or on the remote storage system of your choice. Changing from one to the other is a simple "point and click", showing how a usually complex operation is made easy in EP-Ware.

2 **EP-Archive™: Definable and centralized policies for total information protection**

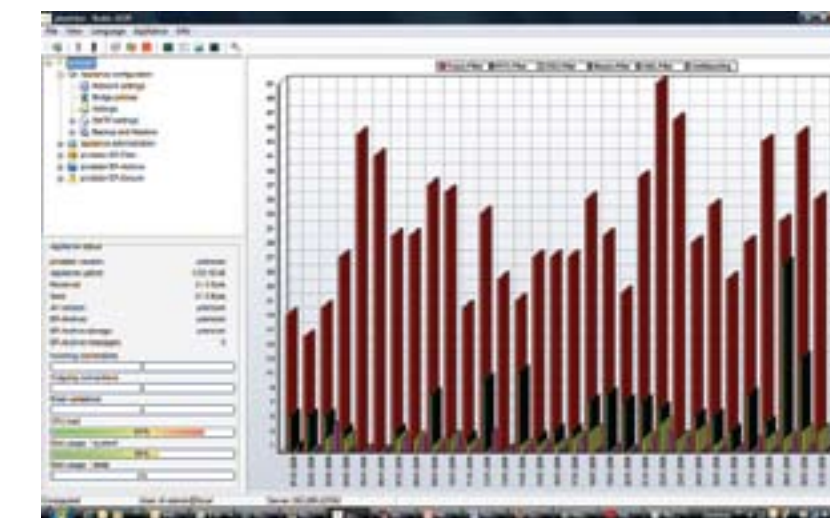
Once it has been filtered, email enters the system and is then subject to the centralized policies of the **EP-Archive** storage engine. Its customizable rules can be tuned to match the organization's business needs.

If the email or its attachments are duplicates, **EP-Archive** automatically tags it as a "single instance", which serves to reduce storage drain. The email is then fully indexed for easy search and retrieval by end users. And thanks to the sophistication of the **EP-Archive** software, archived data can be retrieved in minutes, not hours or days. This feature is particularly important in cases with legal ramifications.

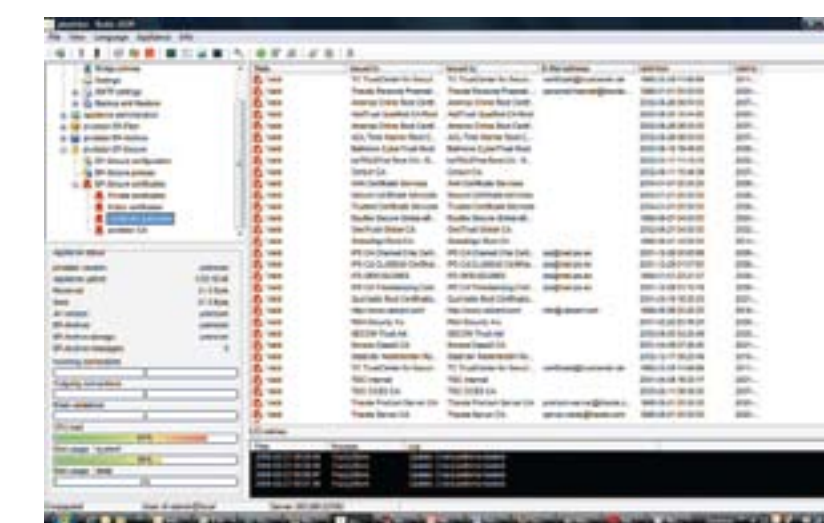
3 **EP-Encrypt™: Protect information using automatic, definable encryption policies**

All information in the archive can then be processed by the **EP-Encrypt** security engine, which rigorously applies encryption and digital signatures to all information. This ensures the integrity of the archived information and demonstrates that no data tampering has occurred (a key requirement in legal discovery).

The **EP-Encrypt** security engine also delivers strong encryption for complete protection of valuable intellectual property and information. Users can elect to encrypt and sign emails and attachments so they are sent and received by necessary external parties without compromising security or privacy.



As an administrator reviews the system a simple "Gas Gauge" display shows the key operations of the system while context sensitive graphs will display this information in an easy to read format. These features further simplify the running of systems normally thought to be complex.



The EP-Secure module features an ultra-powerful digital signature system which is fully compatible with international standards. The system offers unrivalled support for all major security systems supported by organizations such as RSA, AOL, Thawte etc.